

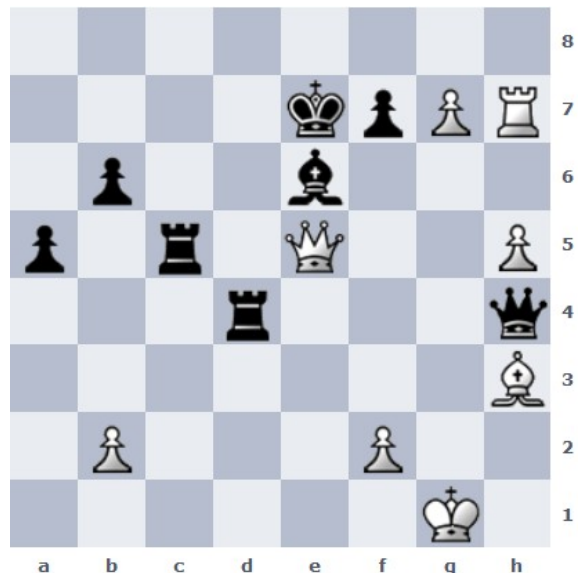
1. Tb6 (sperrt den sK ein) Sd8 2. Ld1#



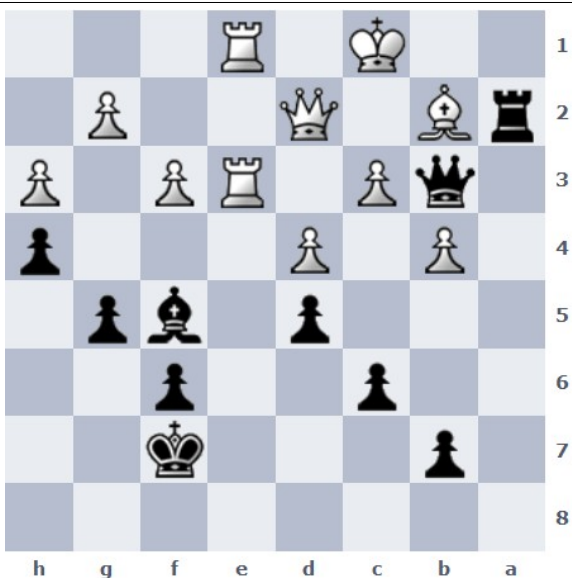
1. f4#



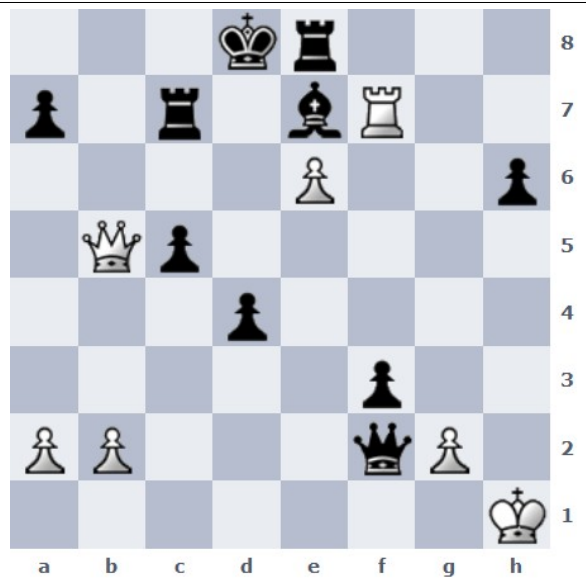
1. Dd6 (droht DxT# und Dxf6#) Tg8 2. Dxf6+ Tg7 3. DxT#



1. DxD+ fxe6 2. g8D+ Kd6 3. Dxe6# (oder Kf6 Dg7#)



1. ... Ta1+ 2. LxT Db1#



1. Db8+ Tc8 2. Dd6+ LxD 3. Td7#